



WELCOME

FM 969 CORRIDOR STUDY OPEN HOUSE

IN-PERSON OPEN HOUSE

Wednesday, April 15, 2026

4 – 7 p.m.

Spiderwood Studios

140 Utley Rd., Elgin, TX 78621

VIRTUAL OPEN HOUSE

Wednesday, April 15, 2026 at 4 p.m.

through Monday, May 18, 2026

OPEN HOUSE PURPOSE

CAMPO and TxDOT are hosting an open house to share feedback received during the second open house, and share proposed short and long-term improvement concepts





CAMPO 101

WHAT IS CAMPO?

The Capital Area Metropolitan Planning Organization (CAMPO) is the Austin region's transportation decision-making body, coordinating regional transportation planning between counties, local governments and transportation agencies. The organization is made up of a 21-member Transportation Policy Board (TPB) that makes decisions on CAMPO policy and allocates federal transportation funds for the region, a 24-member Technical Advisory Committee (TAC) that provides technical expertise and recommendations to inform the Transportation Policy Board, and the Executive Director, who reports to the TPB and oversees the CAMPO staff.

WHAT IS AN MPO?

MPO stands for metropolitan planning organization, which is a regional transportation planning entity designated by the federal government. MPOs were introduced by the Federal-Aid Highway Act of 1962, which requires the formation of an MPO for any urbanized area with a population greater than 50,000. CAMPO is one of 25 MPOs in Texas, and one of 408 in the United States.

WHERE IS CAMPO?

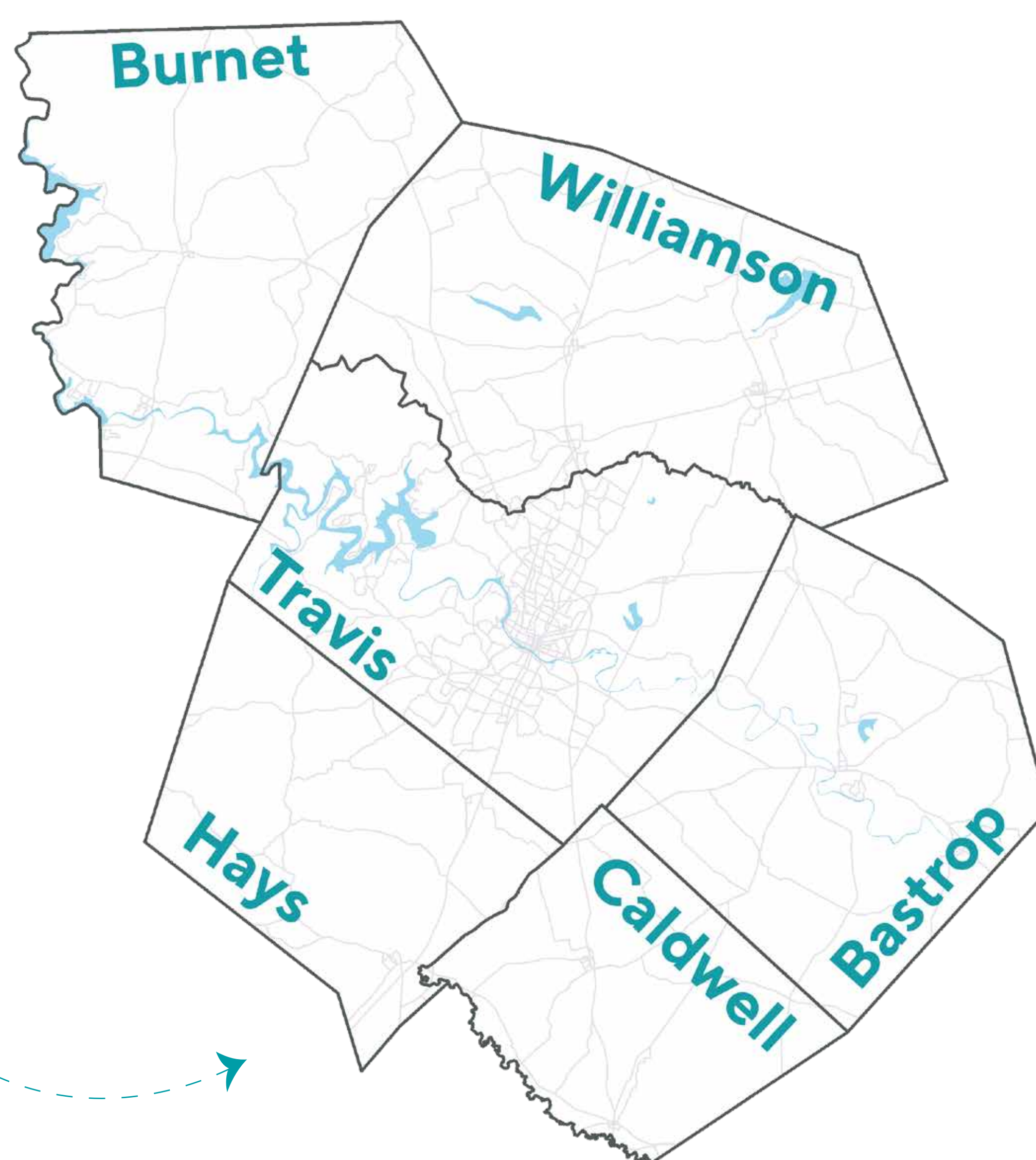
CAMPO conducts regional transportation planning work within six counties: Bastrop, Burnet, Caldwell, Hays, Travis, and Williamson.

WHAT DOES CAMPO DO?

CAMPO closely coordinates with local governments and transportation agencies, such as TxDOT, Capital Metro, and CARTS, in planning for regional transportation improvements. This includes working directly with local governments on technical studies related to transportation and economic development. However, CAMPO does not construct projects – that responsibility lies with project sponsors, such as cities, counties, and transportation agencies.

CAMPO is responsible for creating two primary regional planning documents-- one long-range and one short-range:

- › The Regional Transportation Plan (RTP) is a 20+ year plan, which is adopted every five years, and
- › The Transportation Improvement Program (TIP), which is adopted every two years but covers a four-year window.



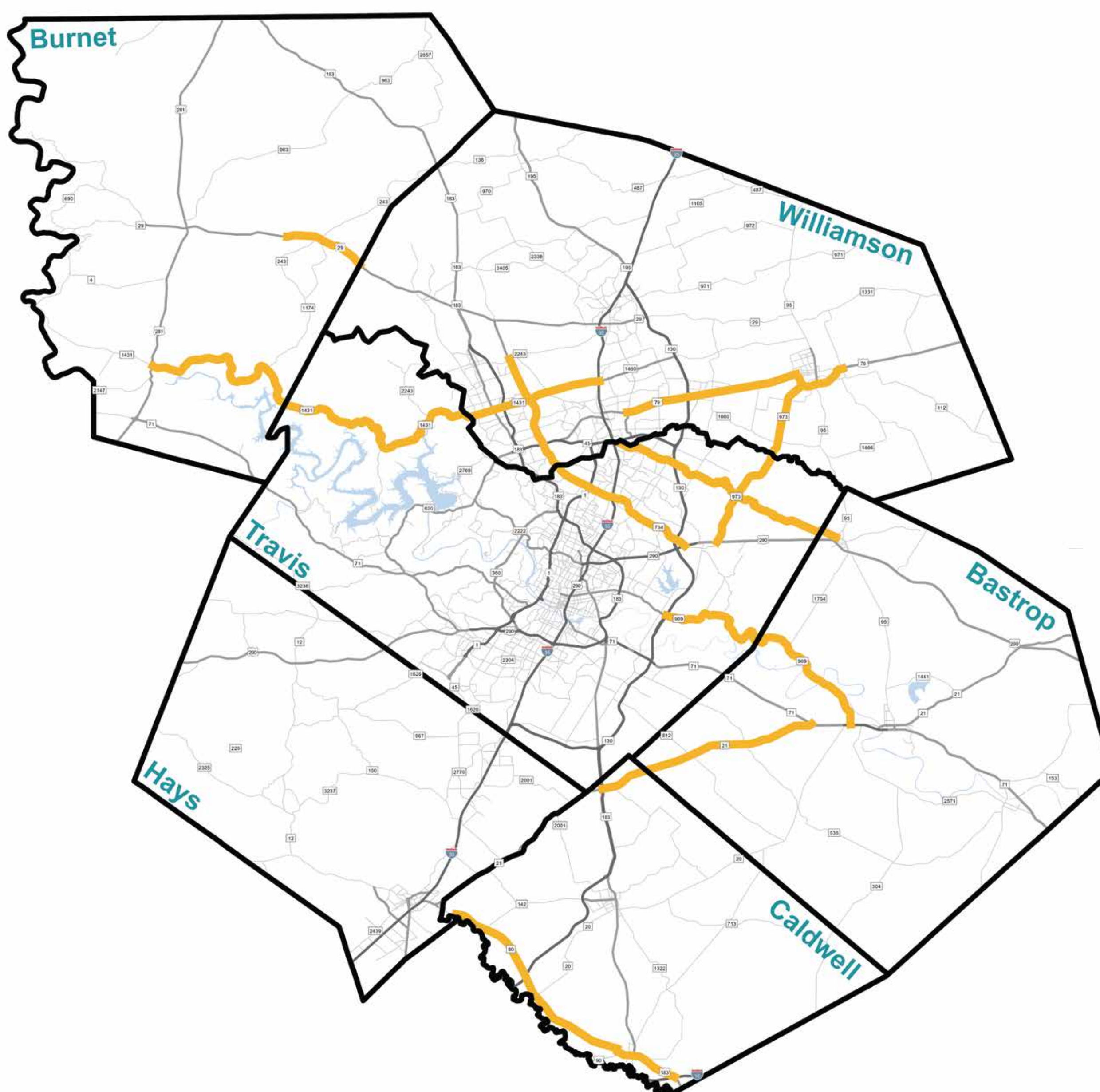


PROJECT READINESS PROGRAM

CAMPO and the Texas Department of Transportation (TxDOT) are working together to plan and design improvements to multimodal corridors throughout the six-county CAMPO region to advance recommendations for inclusion in CAMPO’s long-range plan and for future funding consideration.

These corridors have been identified because they:

- › Connect significant and growing activity centers throughout the region
- › Are a part of the freight network
- › Experience higher-than-average crash rates on the roadway or at intersections
- › Complement existing studies and projects throughout the region



CORRIDOR

COUNTY

FM 973 from US 290 to FM 1160	Travis/Williamson
FM 734 (Parmer Lane) from RM 1431 to SL 1 (Mopac)	Travis/Williamson
FM 969 from SH 130 to SH 21	Bastrop/Travis
SH 29 from CR 258 to the Williamson County line	Burnet
SH 21 from SH 130 to SH 71	Bastrop/Caldwell
US 79 from SH 130 to FM 619	Williamson
SH 80 from FM 110 to IH 10	Caldwell/Hays
RM 1431 from IH 35 to US 281	Burnet/Travis/Williamson
FM 1100 from Greenlawn to SH 95	Travis/Bastrop
US 79 from FM 1460 to SH 130	Williamson





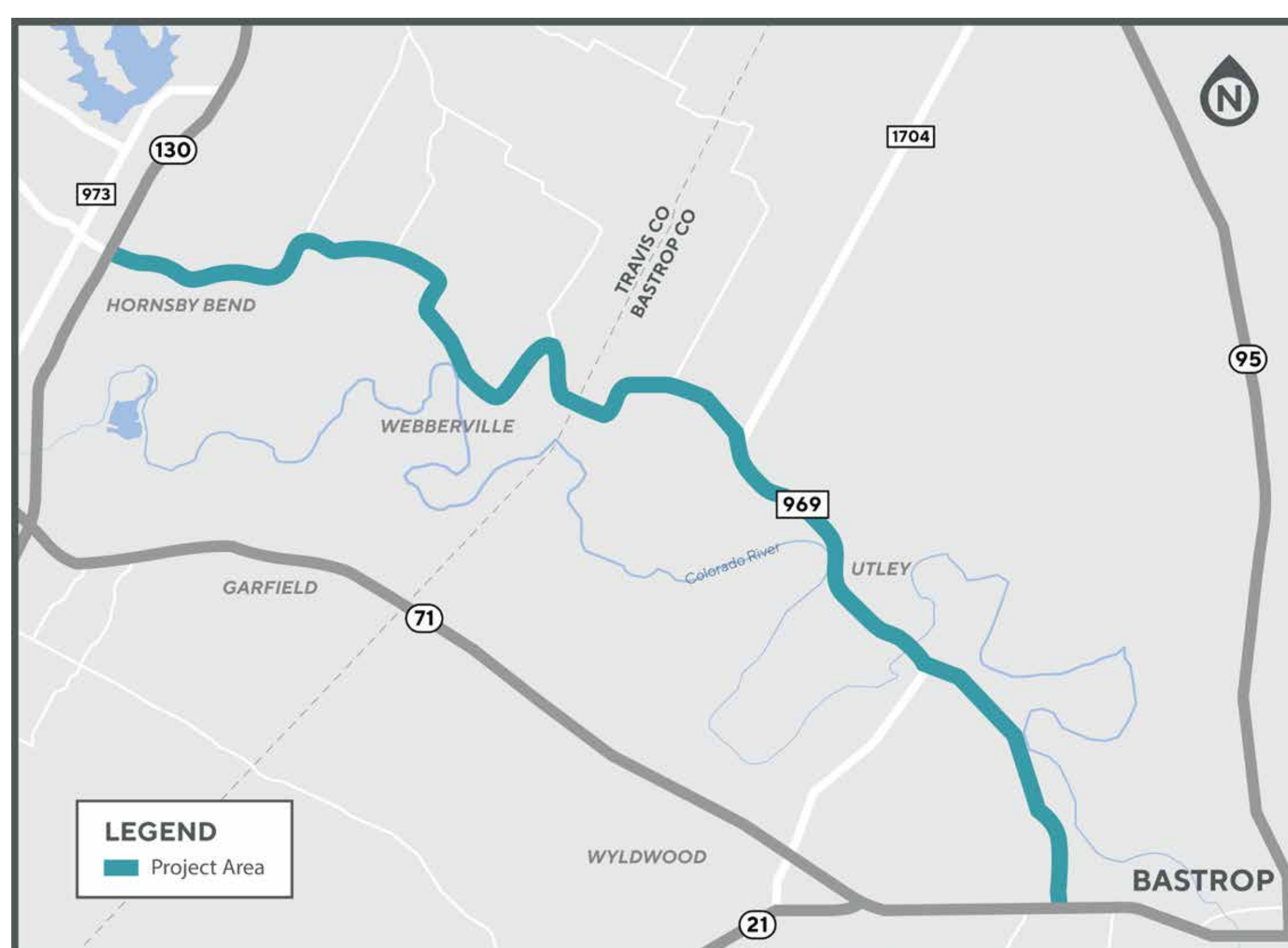
STUDY INTRODUCTION

STUDY OVERVIEW

The Capital Area Metropolitan Planning Organization (CAMPO) and the Texas Department of Transportation (TxDOT) are working together to identify, evaluate, and recommend potential improvements for FM 969 from SH 130 in East Travis County to SH 71 in Bastrop County.

WHY THE STUDY IS NEEDED

FM 969 serves as a critical connection between East Travis County and Bastrop County. CAMPO and TxDOT are conducting this study to identify safety and mobility enhancements and plan ahead as the region continues to grow.



Travis County Population		Bastrop County Population	
53% INCREASE		90% INCREASE	
2020 POPULATION (ACTUAL):	2050 POPULATION (PROJECTED):	2020 POPULATION (ACTUAL):	2050 POPULATION (PROJECTED):
1.29M	1.98M	97K	185K

Sources: US Census Bureau, CAMPO 2050 Regional Transportation Plan

WHAT THE STUDY WILL ACCOMPLISH

The FM 969 Corridor Study will use public input and help CAMPO and TxDOT define and identify feasible options for future improvements to FM 969. The study will include an analysis of current and projected traffic volumes, crash hotspots, environmental features, and needs and concerns identified by stakeholders and the public. This analysis and community input will be used to identify potential improvement options.





GOALS & OBJECTIVES

Identify and recommend solutions for needed safety improvements

- › Evaluate and consider crash data, intersection improvements, bicycle and pedestrian travel, and input from the community



Enhance mobility and functionality of the corridor

- › Improve traffic operations to create a reliable and consistent network for the movement of people and goods through the corridor
- › Improve access to adjacent businesses and neighborhoods

Develop community-supported recommendations for the corridor

- › Employ strategies to maximize participation across diverse audiences that reflect the community
- › Consider and incorporate feedback from the community in each step of the study development process





WHAT WE HEARD: OPEN HOUSE #2

IN-PERSON OPEN HOUSE:

Thursday, October 2, 2025

VIRTUAL OPEN HOUSE:

Thursday, October 2, 2025 – Monday, November 3, 2025



30
IN-PERSON
ATTENDEES



387
ONLINE
VISITS



23
COMMENTS AND
SURVEYS SUBMITTED

COMMENT THEMES:

- › Curves need to be addressed due to safety concerns
- › Traffic flow issues
- › ROW concerns
- › Construction concerns



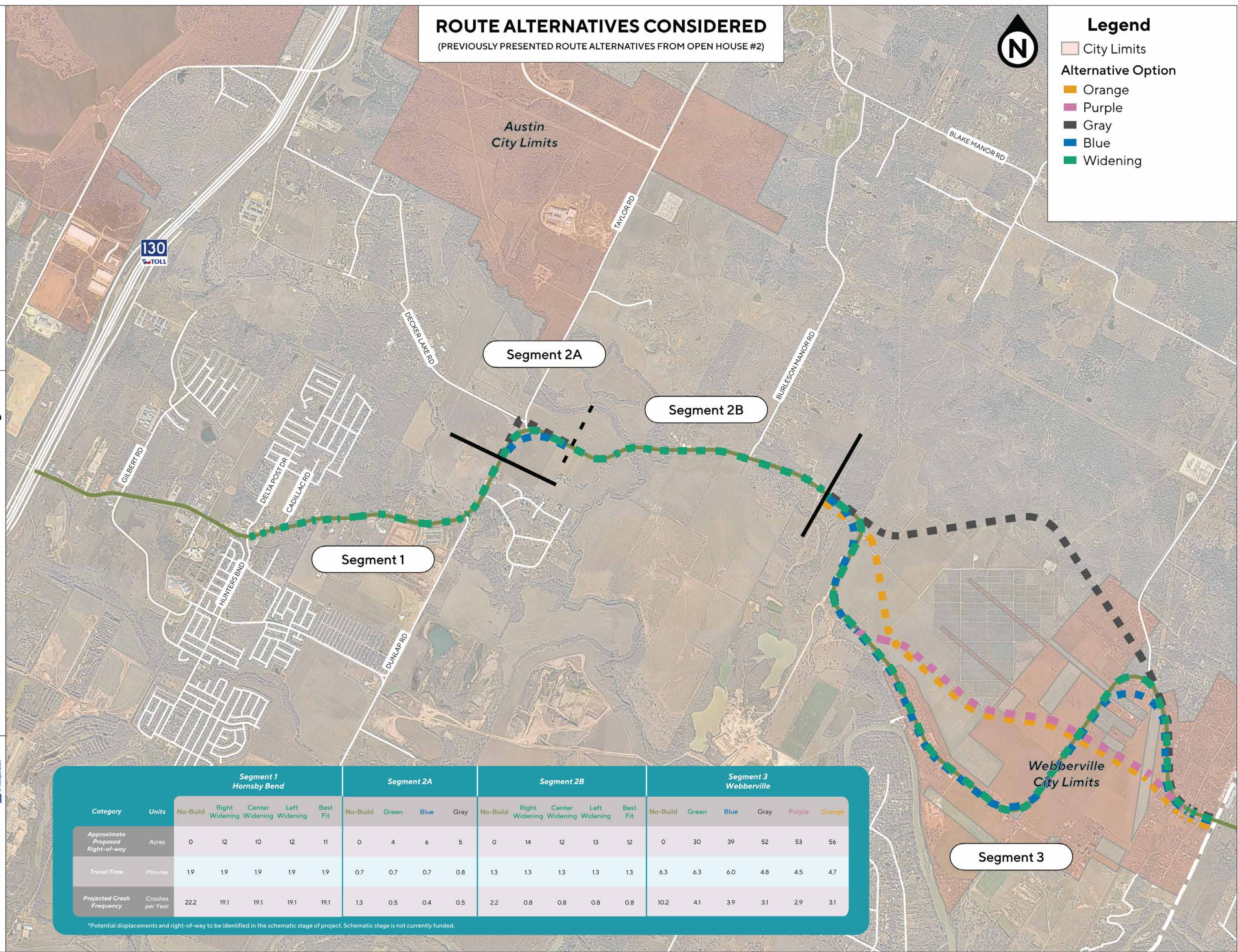
ROUTE ALTERNATIVES CONSIDERED

(PREVIOUSLY PRESENTED ROUTE ALTERNATIVES FROM OPEN HOUSE #2)



Legend

- City Limits
- Alternative Option
 - Orange
 - Purple
 - Gray
 - Blue
 - Widening



Category	Units	Segment 1 Hornsby Bend					Segment 2A				Segment 2B					Segment 3 Webberville					
		No-Build	Right Widening	Center Widening	Left Widening	Best Fit	No-Build	Green	Blue	Gray	No-Build	Right Widening	Center Widening	Left Widening	Best Fit	No-Build	Green	Blue	Gray	Purple	Orange
Approximate Proposed Right-of-way	Acres	0	12	10	12	11	0	4	6	5	0	14	12	13	12	0	30	39	52	53	56
Travel Time	Minutes	1.9	1.9	1.9	1.9	1.9	0.7	0.7	0.7	0.8	1.3	1.3	1.3	1.3	1.3	6.3	6.3	6.0	4.8	4.5	4.7
Projected Crash Frequency	Crashes per Year	22.2	19.1	19.1	19.1	19.1	1.3	0.5	0.4	0.5	2.2	0.8	0.8	0.8	0.8	10.2	4.1	3.9	3.1	2.9	3.1

*Potential displacements and right-of-way to be identified in the schematic stage of project. Schematic stage is not currently funded.

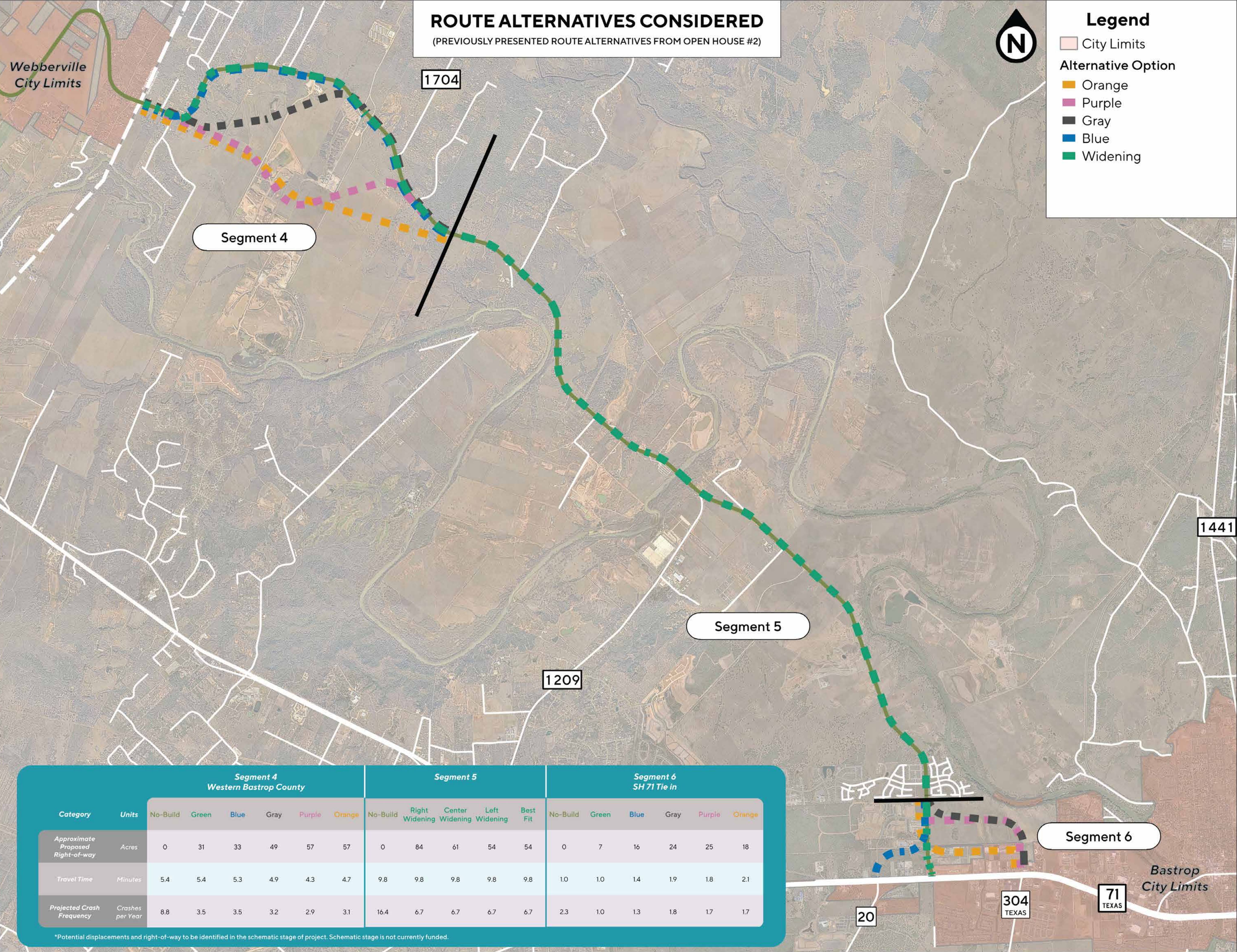
ROUTE ALTERNATIVES CONSIDERED

(PREVIOUSLY PRESENTED ROUTE ALTERNATIVES FROM OPEN HOUSE #2)



Legend

- City Limits
- Alternative Option**
- Orange
- Purple
- Gray
- Blue
- Widening

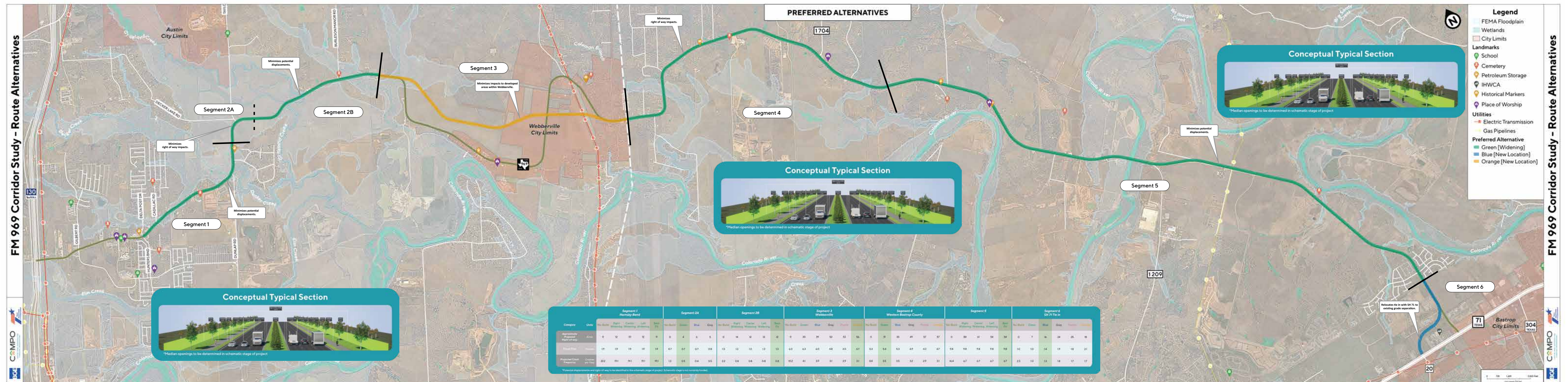


Category	Units	Segment 4 Western Bastrop County						Segment 5					Segment 6 SH 71 Tie in					
		No-Build	Green	Blue	Gray	Purple	Orange	No-Build	Right Widening	Center Widening	Left Widening	Best Fit	No-Build	Green	Blue	Gray	Purple	Orange
Approximate Proposed Right-of-way	Acres	0	31	33	49	57	57	0	84	61	54	54	0	7	16	24	25	18
Travel Time	Minutes	5.4	5.4	5.3	4.9	4.3	4.7	9.8	9.8	9.8	9.8	9.8	1.0	1.0	1.4	1.9	1.8	2.1
Projected Crash Frequency	Crashes per Year	8.8	3.5	3.5	3.2	2.9	3.1	16.4	6.7	6.7	6.7	6.7	2.3	1.0	1.3	1.8	1.7	1.7

*Potential displacements and right-of-way to be identified in the schematic stage of project. Schematic stage is not currently funded.



PREFERRED ALTERNATIVES





PROCESS & TIMELINE

1

Data Collection and Analysis
SPRING 2025

- Analyze existing traffic and safety information including existing traffic volumes and projections, crash data, bicycle and pedestrian accommodations, and transit service
- Identify environmental features and constraints in the study area
- Collect input from the community on concerns and needs, existing environmental features and constraints, and desired transportation and safety improvements

2

Develop Potential Improvement Concepts
FALL 2025

- Use input and technical analyses from previous steps to identify and develop potential improvement concepts for FM 969
- Establish evaluation criteria and quantify the impacts and features for potential improvements
- Collect input from the community on potential improvement concepts, including a no-build option



3

Recommend Improvement Concepts & Prepare Feasibility Study Report
SPRING 2026

- Use public input from previous steps to refine potential improvement concepts
- Develop a feasibility study report with recommendations for potential design concepts and improvements for FM 969
- Present recommendations to the community

NOTE: Future project development phasing to advance recommendations from this study is a multi-year process that will require additional funding. Future phases will include gathering additional community input and may also include performing detailed environmental studies, detailed design, right of way acquisition and utility coordination, and construction.





HOW TO COMMENT

REVIEW MATERIALS ASK QUESTIONS SHARE YOUR THOUGHTS

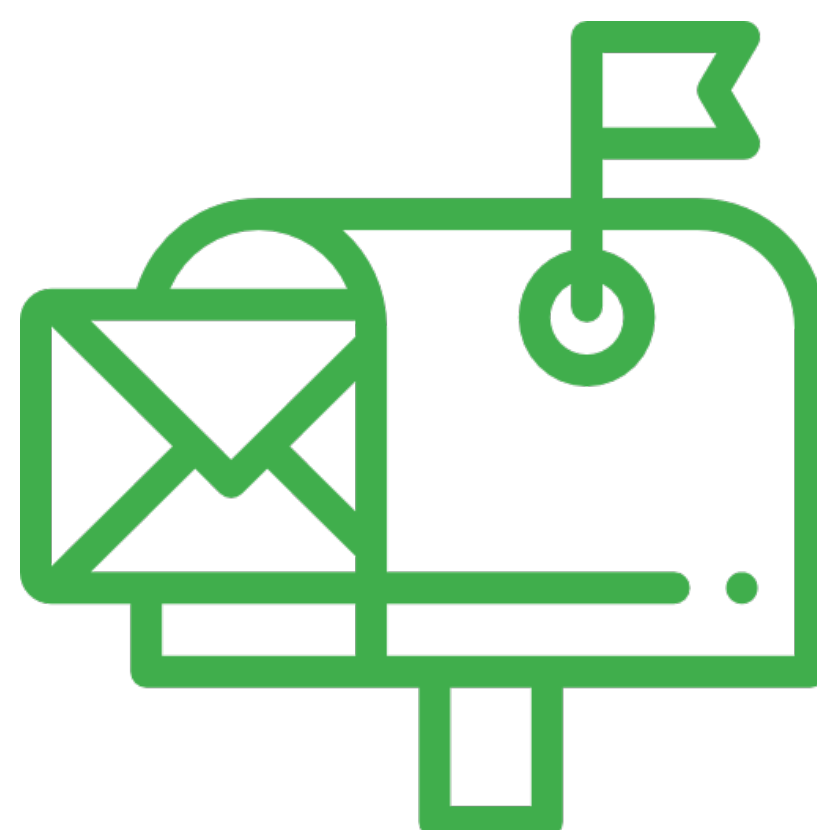
Your input is an important part of developing this study, and there are several ways you can share your input with the study team:



Complete a survey
bit.ly/FM969Survey



Email comments to
CAMPOStudies@projectinformation.com



Mail comments to
FM 969 Corridor Study
c/o CD&P
PO Box 5459
Austin, TX 78763

You are welcome to share input at any point during the study development process, but to be included in the open house record, comments must be received or postmarked by

MONDAY, MAY 18, 2026

